



# HISTORY MATTERS

Fall 2022

Fall 2022

## Message from the President.....

### 2022-2023 Programs and Mansell House Enhancements

In August, Pat Miller, Mary Lee, Lynn Sickeler, Connie Mashburn, and I met and discussed ways to improve membership programs for the coming year. Four concepts emerged:



- 1) After not meeting for over a year due to COVID, and meeting almost exclusively at the FFA Log Cabin for the 2021-2022, **people wanted to get out and visit other area venues.** It has been a few years since **taking a field trip.**
- 2) Two area historical societies have additional venues: **Roswell has constructed a history room** similar the History Room at the Alpharetta City Hall; **Cherokee County Historical Society** has taken part of their old police station and remodeled the building for similar use.
- 3) We want to **offer programs outside of the traditional third Thursday** of the month membership meeting, with a goal of **more offerings and at different times** with the expectation that this flexibility will draw more participation from the membership. Let's offer a few mid-day "**Lunch and Learns**"
- 4) **Let's get more members involved!**

As a result, we've had a good start to our Fall programming. Be sure to read in this newsletter the summaries of our August and September meetings and *make special note of the upcoming October and November field trips.* *It's important to follow the instructions regarding signing up.* We're looking forward to many members joining the fun!

Also, be sure to plan on joining us for the Christmas Luncheon planned for December 4<sup>th</sup>, 2022, from 2 – 4pm at the Log Cabin.

We're firming up ideas for our 2023 programming. Your ideas and suggestions are welcome--send to me at [edwardcmalowney@gmail.com](mailto:edwardcmalowney@gmail.com)

We're in the process of making some enhancements to the Mansell House. The Archives have been moved to the lower level of the Log Cabin, making room for a Bride's Room. We're working together on

this project with the Alpharetta Recreation and Parks Department who has repaired the chimney, replaced steps and spindles to the large gazebo, and the small gazebo will be replaced by a new gazebo. These enhancements will help us continue to market the Mansell House as an event space. Read below for information about more of the improvements.

~Ed Malowney

---

## Upcoming Fall 2022 Programs

**Sunday, October 16th Membership Meeting: Tour the Autrey Mill Nature Preserve** buildings (Tenant Farmhouse, Summerour House, Farm Museum, Green General Store, and Warsaw Methodist Church) and picnic at the newly constructed North Pavilion. The tour will last 1½ hours and will start at 2:00 p.m., followed by a covered dish picnic. NOTE: This tour is in lieu of the normal third Thursday membership meeting.

**Wednesday, November 2, 2022: Special Fieldtrip--Kennesaw Mountain Battlefield and the Southern Locomotive Museum**

The Alpharetta Adult Activity Center has set up a fieldtrip to tour the Kennesaw Mountain Battlefield and the Southern Museum of Civil War and Locomotive History for Wednesday, November 2, 2022.

The fieldtrip includes a tour of Kennesaw Mountain Battlefield Visitor Center and Park, a visit to the Civil War and Locomotive History Museum (home of the General, one of two locomotives involved in "The Great Locomotive Chase,") and a narrated discussion by local historian Jim Howe. Jim will speak about the strategy and tactics of the June 27, 1864 battle that saw the South stop (for a very short time) the Union Army advance on the mountain.

Price is \$25.00 per person which covers the bus trip and admission to the Kennesaw Battlefield and the Museum. We will leave from North Park, 13450 Cogburn Road, at 10:00 am. Lunch will be at the Marietta Diner at your own expense. Jim Howe will make all reservations for the group.

**Registration for the November 2<sup>nd</sup> fieldtrip will begin on Monday, October 10, 2022:**

Participants will need to call (678-297-6142) or come by North Park and register. Check, Credit Card, or Cash is acceptable. When registering, please tell the Park representative that you are a member of the Alpharetta & Old Milton County Historical Society, as they will be holding at least 15 seats for AOMCHS members (and more) if they are available.

On Tuesday, **November 1<sup>st</sup> at 11:30 am at the FFA Log Cabin** we will view the movie *The Great Locomotive Chase* (1956 Walt Disney) which tells the story of the Texas chasing and catching the General as a "lunch and learn." The movie, starring Fess Parker as Major James Andrews, is 88 minutes long. Bring your lunch and beverage. Admission and popcorn are free!

**November Membership Meeting: Musical Cabaret.** Shack Lewis, AOMCHS Vice President, will emcee a mini musical cabaret of songs from American history featuring live performances by some of our own members and special guests.

**December 4<sup>th</sup> 2022: The AOMCHS Christmas Luncheon** is scheduled for 2-4 pm at the FFA Log Cabin.

## Mansell House

We have exciting Mansell House news! The departure of the Archives to the Log Cabin left a big empty room. We are now creating a BRIDES ROOM. So far, crown molding is in, the original mantel has been reinstalled, we're painting and refinishing the floor, and more is happening. Curtains and furnishings are next. We will have a big reveal when all is ready. Stay tuned for more updates!

~Jeannie Goodwin

# Happy Birthday!

### October

10/2 Cindy Hogan  
10/5 Lynn Sickeler  
10/10 Doug Ross  
10/17 Michael Buchanan  
10/17 Cynthia McAtee  
10/22 Janice Cronan  
10/30 Connie Mashburn

### November

11/10 Jackie Angel  
11/10 Pat Miller  
11/17 Dick Freeman

11/20 Joan Compton  
11/20 Eugene Fouts  
11/21 Buck Bailey  
11/24 Charlie Reavis  
11/25 Kim Woods

### December

12/6 Tracie Mara  
12/7 Carolyn Fouts  
12/10 Deborah Eves  
12/28 Marge Pierce  
12/31 Carol Price

## WELCOME NEW MEMBERS!

Michael Cochran  
Helena Cochran-Jones  
Richard "Dick" Freeman

## DUES

**Reminder:** Membership dues are paid in the autumn of each year. Dues are \$20 for a single membership and \$30 for a family membership. Current members who are 80 years old and up are designated as Lifetime Members and will no longer need to pay a membership renewal fee. Dues can be paid at our monthly membership meeting or by sending a check to:

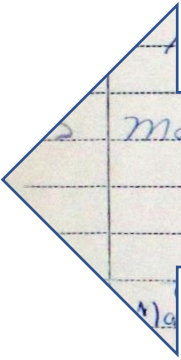
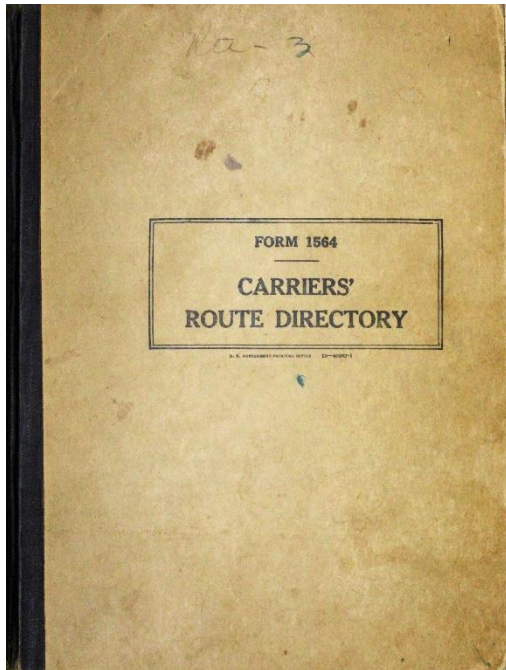
Membership Chair/Mary Lee  
Mansell House  
1835 Old Milton Parkway  
Alpharetta, GA 30009

# From the Archives

## Archives Collections

The Linda Strickland Stovall Collection, recently gifted to the Archives, contains the Alpharetta Post Office Carrier's Route Directory for Rural Route 3 which belonged to her father, Rurel Macon Strickland.

Rurel M. Strickland transferred from his position as Property & Supply Supervisor at the Atlanta General Depot in May 1956 and effectively became the Alpharetta Rural Route 3 Carrier in June 1956. Digital copies of the Official Rural Route Descriptions from 1959 to 1964 were also obtained and show each step of the route that he drove to deliver mail and parcels to Alpharettans.



NAMES	STREET OR ROUTE	NO.
Dass	}	310
Julia		
Edwin		
Stin HOMER with loon Mrs ROGER	}	222
Mashburn E.W.		
Eunice	}	378
Larry E		
Carmine J. (null, next box)	}	252
Imogene		
Wm Fred m.	}	65
Fred m. annie m.		
L Harry K.	}	398
Anne; Kaye		

## Requests & Updates

We recently received a letter of thanks from the Alpharetta American Legion Post 201 Commander Fred Mahony for our efforts to help with locating historical records pertaining to the Legion for their upcoming gala. This mission hasn't ended though and we will continue to research and provide any pertinent information up until the end of October.

Volunteers have started working through the Vertical Subject File Collection, diving into Subject File 1 that contains, but is not limited to, Alpharetta City Council and history to community files such as Crabapple and Ocee. Come join us on Tuesdays and Thursday from 11am – 2pm in the Archives room at the Log Cabin.

### History of Mountain Park Publication

Arcadia Publishing has approached the mayor of Mountain Park about publishing the history of the city. Arcadia produces softback books with a great deal of photographs and visuals. Since the city has no documented history, gathering it is a challenge of primary research only. Any help will be greatly appreciated for research purposes, as well as publishing uses (with appropriate acknowledgements). Actual information or contacts for the following are greatly appreciated:

- Area map for 1925 showing roads leading to Mountain Park
- Any photographs, especially with identifiable people, for the timeframe 1925 – 1940
- Knowledge of alternatives for local business incorporation filing in 1925 other than the Secretary of State or Milton County Courts

Please send information submissions to [AOMCHSarchives@gmail.com](mailto:AOMCHSarchives@gmail.com) and include 'Mountain Park' in the subject line.

### Who painted this from an old photograph?



The painting above features, from left to right, Foster Jones, Josephine Wyatt Jones, Effie Shirley Bates, and in front, William Newton Bates. Both the photograph and the painting are in archival storage. The painting is to be hung in the archives & research library.

If you can tell us who painted this, please send the info to [AOMCHSarchives@gmail.com](mailto:AOMCHSarchives@gmail.com)

*~Stephanie Andersson*

## From the Historian

### Alpharetta Gem The Skelton-Teasley House 61 Roswell Street

This Greek Revival house contains four equal-sized rooms that are accessed from the front hall. Four fireplaces with interior chimneys heat the home. The foundation is flush with the ground rather than resting on piers. The 12-inch brick walls flare out to the bottom to 48 inches. The floor and ceiling joists are original, as are the Georgia heart pine tongue-and-groove floors.

The 1100 sq. ft. house sits on the highest point in the heart of downtown Alpharetta. It was built for Dr. Oliver P. Skelton and his wife Caroline. The structure is the oldest surviving building in downtown Alpharetta, although the exact year of construction is unknown. One former owner put the date at 1824 while two others estimated 1856. Recent research suggests the house was likely built in 1858 or 1859.

Several years ago, then owner Phil Christian sought to have the house listed on the National Register of Historic Places but the application was denied due to renovations made years earlier. The Skeltons' daughter, Louisiana, married John Teasley and after the deaths of her parents she and her husband inherited the house and resided there.

*~Connie Mashburn*



## **Community Leader Oliver Perry Skelton**

Skelton was born in South Carolina on November 3, 1817. By 1850, he and his wife Caroline were living in Roswell, Cobb County, where he is listed as a medical doctor. He became an important factor in the development of Milton County and the town of Alpharetta. Milton county was created in 1857 and the Alpharetta was established in 1858. In April 1858, county officials laid out 77 city lots to be sold to the highest bidder. Oliver Skelton purchased one of the lots that was located on Roswell Street, and presumably, built the Skelton-Teasley House there.

Skelton was appointed postmaster of the new town of Alpharetta and served in that position for seven years. The 1860 federal census for the Alpharetta district shows that Skelton was serving as the county's ordinary. In those times, the ordinary oversaw the operation of the county. He was the first to fill that position. The census also showed Skelton with an estate valued at \$3700. That placed him among the town's wealthiest householders.

During the years of 1862 through 1867, the community suffered an outbreak of smallpox. Dr. Skelton treated those who contacted the disease and was paid \$1,978 for his services. In the spring of 1864, as Sherman's troops were well on their way to Atlanta, Dr. Skelton had the county's official records moved to Elbert County for safe keeping. As it turned out, foraging Union troops came through Alpharetta and burned less important records that officials were able to reconstruct.

Both Dr. Skelton and Caroline died in 1890. They are buried in Resthaven Cemetery in downtown Alpharetta.

*~Connie Mashburn*

## **Alpharetta History Museum**

The Alpharetta History Museum is located on the first floor of the Alpharetta City Hall at 2 Park Place, Alpharetta, Georgia 30009. The museum is open from 8:30am until 4:40pm Monday through Friday.



This 1830s spinning wheel was used by the Crisler family who were among the earliest settlers in the area now known as North Fulton County. The wheel was donated to the AOMCHS by Crisler family descendant Frederick Crisler House, a 1959 Milton High graduate. This artifact can be seen in the Alpharetta History Museum.

*~Connie Mashburn*

This is one of the football jerseys worn by the 1954 Milton High Football B Team. It dates back to the 1940s. Milton High purchased jerseys in used condition from a school that had discontinued fielding a football team. The uniform pants were red like the body of the jerseys. The helmets were leather covered and had been painted royal blue. The background of the display is a section of gym flooring salvaged from the old Eagle Village gym that was built in 1950. The gym was located behind the old city hall and was used by the Milton High basketball team until a gym was constructed on the Milton High campus during the 1953-54 school year. This exhibit can be seen at the Alpharetta History Museum.



~Connie Mashburn



## Bicentennial Quilt

In preparation for the Bicentennial in 1975-76, a group of ladies from the Alpharetta United Methodist Church—the Nancy Norman Circle of United Methodist Women (UMW)--gathered to make a quilt commemorating the celebration. That quilt has been donated to the Alpharetta & Old Milton County Historical Society Archives. We hope that the quilt can be displayed somewhere in the Log Cabin.

The provenance of the quilt is that after it was made it was displayed at the church in a special case made by Kris Krogh, a longtime member of the church. Throughout the years it was a treasured memory for the members. In 2018, the church began a major remodeling and construction changed the entrance to the church from the Main Street side to the Cumming Street side of the building. During that remodeling, the decision was made to remove the quilt and its cabinet. The quilt became the property of the UMW and was in the possession of the President, Holly Hunter.

Sometime during the past couple of years, Holly made it known that the UMW wanted to have the quilt in the possession of some organization that would preserve it and hopefully display it for the public to see. Arrangements were made to donate the quilt to the Historical Society. That donation took place in August and was shown at the August meeting of the Historical Society.



Ben Hollingsworth has been preparing the quilt for addition to the archives by making a sleeve to hang the quilt and a label identifying who made it and the occasion.

We hope that members and the community will enjoy the quilt for many years to come. It is a treasure and a historical artifact.

Of interest to Historical Society members, Nancy Norman was the mother of Marian Norman Bagwell who was a member of the Society and lived to be 102 years of age.

MAKERS OF THE EMBROIDERED QUILT BLOCKS	MAKERS OF THE STAR QUILT BLOCKS
Clara Nix – embroidery of Eagle in middle of quilt	M. Moser
J. (June) Myers – Liberty Bell	M. Bender
M. Brodie – Native American	S. Bowles
E. Cox – Fife Drum Soldiers	J. Herrington
G. Mote and J. Buchanan – Conestoga Wagon	L. (Linda) Almond
G. (Gloria) Mote – Wright Brothers	S. Palmer
G. Loudy – Soyuz/Apollo Docking	S. Robbins
J. Segers – Telephone	R. (Rachel) Jones
P. Nichols – George Washington	
G. (Gloria) Mote – Abraham Lincoln	
M. McCook – Ben Franklin with Kite	
G. Loudy – Automobile	
J. Buchanan – Radio	
J. Buchanan – Iwo Jima	
Jane Buchanan – Statue of Liberty	
<i>Signed at the bottom "Nancy Norman Circle, UMW"</i>	<i>Some star blocks have no name</i>

# Out and About

## Mystery Location - Number 1

It appears that my first attempt to choose a place for you to locate in Alpharetta was a puzzle that no one solved. It is remote. I've lived in Alpharetta since 1974 and I had no idea that there was a place like this within the city limits.

If you know Milton Park on North Point Parkway between Haynes Bridge and Kimball Bridge, you can get to this location by turning onto Mill Creek Avenue in front of the Steinway Piano Galleries and follow Mill Creek Ave. back about half a mile and you will see a lake on the right. This bridge leads to a serene island with a park bench on it. You may see a few turtles and there are fish swimming in the lake.

I discovered this site last year during *Paint the Town* and painted a picture of it.

Next, I'll choose some place that more people pass every day.

## Mystery Location - Number 2

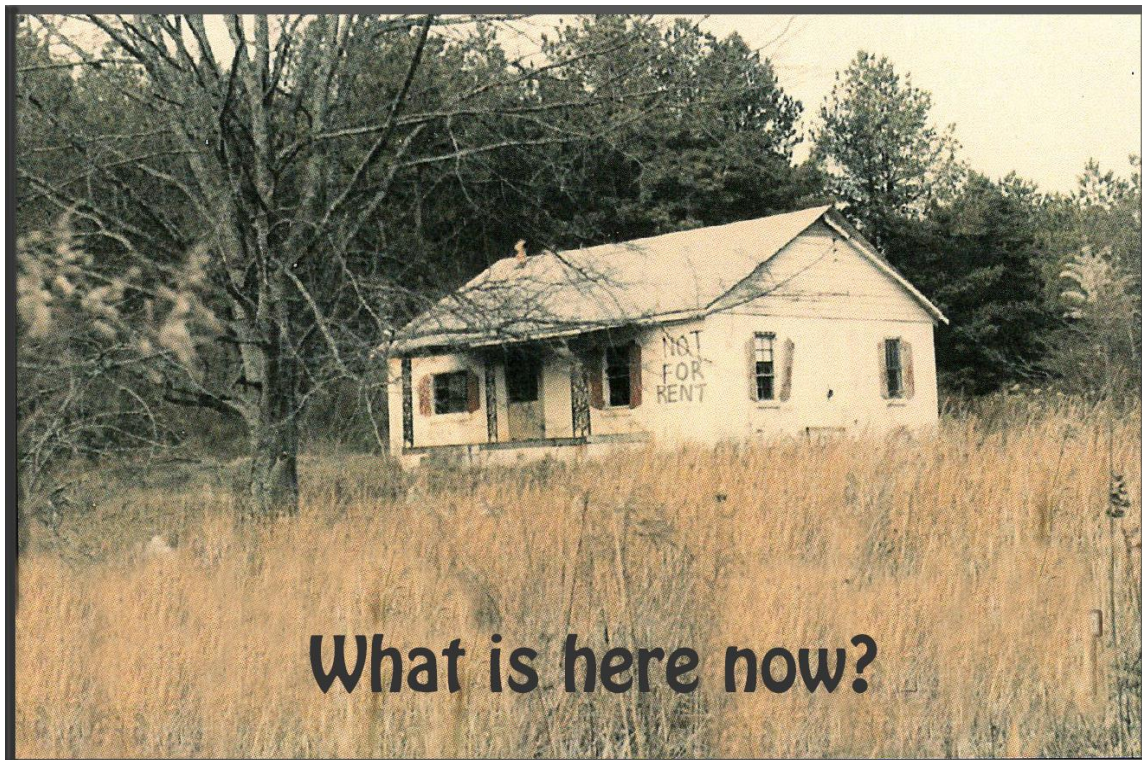
I think everybody passes by this location at least once a week. My guess is that about a quarter of a million people pass this location every day. It is on one of Alpharetta's main roads.

This Mystery Location is a little different from the first one. I'm going to show you a photo of what was there 15 years ago and you need to guess what is there now. The value of this property is now worth over a billion dollars.

**First person to email me [bhollyart@comcast.net](mailto:bhollyart@comcast.net) with the answer will win a photograph of what was there before and what is there now.**

Good luck.

~Ben Hollingsworth



## Member Spotlight – Nat “Shack” Lewis

**Nat “Shack” Lewis** is a musician and realtor, with an electrical engineering degree from Georgia Tech. He graduated from Milton High School in 1978. After Milton, Shack “hit the road” from 1979 – 1988, performing as a musician for numerous groups. He toured the Southeast U.S. and all over Quebec before returning home and enrolling at Tech. Shack graduated from Georgia Tech in 1996 with Highest Honors in Electrical Engineering with a RF (radio frequency) specialization. From 1997 – 2000, he worked at Scientific Atlanta developing products for cable TV applications. He helped invent the “Gainmaker” amplifier for cable transmission before starting work in Real Estate. But he’s still playing and performing music at night. Shack is a volunteer with the Alpharetta and Old Milton County Historical Society, works with the Theatre and Chorus departments at MHS, and is on the MHS 100<sup>th</sup> Anniversary Committee. He still attends the Alpharetta First United Methodist Church, the same church he was walking to when he was eight years old.

Some of Shack’s fondest memories of growing up in Alpharetta involve his time at Milton High School. At Milton, Shack spent most of his time on his Band pursuits. His favorite class was Band because he’s always loved to play and sing since he was young. His favorite teacher was Mr. Leon Cole, his band teacher, that he described as “an amazing man.” Shack shared some of his MHS memories: “I walked to Milton from my house in the 70’s. My parents still live there. I was always very involved with the band program. Leon Cole was my band director. He was the first teacher to take a real interest in my musical talent. He

became a good friend and we stayed friends until he died. I played in the marching band (The Dixie Eagles), the concert band, the pep band (The Rebel Rousers), and the jazz band (The Harmony Grits). I remember someone streaking at a graduation. We always had great parties in the area and I was often performing at them and other school functions. Other great memories are the Follies, an assortment of acts that Mr.



Cole would produce every year, and when my rock band performed in the gym for the student body. Students would meet in the ‘fields’ on top of the hill behind the barn with graffiti and we always had a fire we would gather around. It’s now the North Fulton hospital. We spent a lot of time outside back then.”

Shack still lives in Alpharetta, his hometown. Shack is the AOMCHS Vice-President. He also recently was appointed as the newest member of the City of Alpharetta Historic Preservation Commission. His continued goal is to use his Real Estate skills to help preserve and protect our old homes.

Shack met his wife Jen while they were both playing in the same band together. They married in 1999 and had their own band for many years. They have a son, Harrison, who recently graduated from Milton and now attends Northwestern University and a daughter, Sarah, who is currently enrolled at MHS and is a star in the MHS Theatre Department. Both of his children are following in their parents’ footsteps as musical and stage performers.

## Raising the Dead

It's almost Halloween and the spirits are getting restless here in North Fulton. I've met a few of them and can assure you that when they rise from their graves most are really quite friendly.

Okay, no! I really don't talk to the dead, but with help from the great researchers at the Roswell Historical Society and some voluntary "ghosts," I can introduce you to a few of our local spirits. These particular spirits are all permanent residents of the Pleasant Hill Historical Cemetery. Perhaps you've noticed it. It's the small African American cemetery located behind the Floor and Decor Store on Holcomb Bridge Road.

**On Saturday, October 22<sup>nd</sup> at 5:00pm, the Roswell Historical Society will present *Beyond My Stone*, a guided tour of the Pleasant Hill Historical Cemetery.** Volunteer cast members, some of whom are descendants of the persons they portray, will "rise" from their graves to introduce themselves. You'll meet soldiers, former slaves, community leaders, educators, farmers, and church leaders. As these ordinary citizens tell their personal stories, they will give you a fascinating glimpse of life in early Roswell.

Tickets for "Beyond My Stone" are \$10 and may be reserved online at [https://www.paypal.com/donate/?hosted\\_button\\_id=3C3L8PKGDCJFJ](https://www.paypal.com/donate/?hosted_button_id=3C3L8PKGDCJFJ)

or by check payable to RHS Cemetery Fund, PO Box 1636, Roswell, GA 30077. All proceeds will be used for cemetery preservation. Tickets are limited to 100, so reserve yours soon. Don't miss this opportunity to see history come to life.

In case of inclement weather the performance will be postponed to November 5th at 5:00pm.

*Beyond My Stone* (©Connie Huddleston) is produced by Janet Johnson, Roswell Historical Society Cemetery Chair, and written by Pat Miller, Alpharetta and Old Milton County Historical Society Cemetery Chair.

~Pat Miller



*Beyond My Stone* Pleasant Hill Historical Cemetery



Rimple Debora Scottie (as Virginia Lawton Blackwell)

## Wreaths Across America

The Alpharetta and Old Milton County Historical Society is once again partnering with the Patriots of Liberty Chapter of the D.A.R. to place holiday wreaths on the graves of all veterans buried in the Rest Haven, Old Big Creek, Pineview, and New Big Creek Primitive Baptist Church cemeteries. In doing so, we will be joining volunteers in more than 2,500 cemeteries in the United States and across the globe. This year's wreath laying will be Saturday, December 17<sup>th</sup>. You can help us honor America's fallen heroes by sponsoring a wreath(s).

To sponsor a wreath all you have to do is mail a check made out to Wreaths Across America for \$15 (or any multiple of \$15) to:

Alpharetta and Old Milton County Historical Society  
Attn: Pat Miller  
1835 Old Milton Parkway  
Alpharetta, GA 30009

Your gift to Wreaths Across America will be fully tax deductible.

Please join the Historical Society and the D.A.R. in honoring the brave men and women who protected our country. It's the least we can do for them.





**Classes taking place at the Log Cabin this Fall and Winter:**

***Crochet Basics and Beginner Projects***

November 3<sup>rd</sup> 10am-12pm Ages 13+

December 1<sup>st</sup> 10am-12pm Ages 13+

February 2<sup>nd</sup> 10am-12pm Ages 13+

The purpose of this class is to present beginning crochet techniques and to guide the learner to completion of beginner projects.

Classes will be taught by 31 Hands Chapter of Crochet Guild of America

Register at this link:

<https://www.alpharetta.ga.us/government/departments/recreation-parks/cultural-services/arts>

---

## **Did you know.....**

There were three newspapers in Old Milton County:

- ***The Milton Democrat*** was first published in 1884 by **William A Porter**. A later editor was **W.E. Nisbet** who also served as Clerk of the Superior Court.
- ***The Alpharetta Free Press*** was the dominant newspaper. **George D. Rucker** served as editor and published the paper from 1886 until his death in 1922. His editorial opinions were respected by many editors in the state of Georgia and often sparked spirited debate. One such opinion was his opposition to the sale of Coca-Cola as a beverage.
- ***The Milton County News*** had the motto "Pull for Milton or Pull Out." It was edited in 1911 by **J.R. Trammell**. Trammell also represented Milton County as a State Senator from the 39<sup>th</sup> District.

*Alpharetta and Old Milton County People and Places*  
~Ed Malowney

# Membership Programs

## Summer Recap

August 2022

Members were invited to share a tool, implement, artifact, family heirloom, or item of historical interest. Each presenter was given 3-5 minutes to introduce and explain his/her item and take questions and comments from the floor. Fourteen members shared over twenty items of interest.



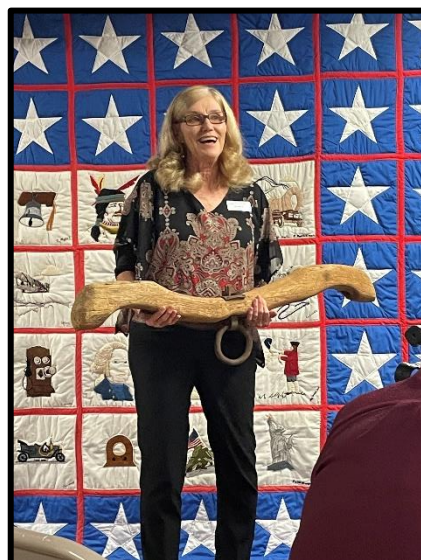
Bonnie Steadman--Afghanistan Egg and Pakistan Rug



Charlie Russell—Childhood home in Tennessee predates Civil War



Helena Cochran-Jones donated a wreath to the Log Cabin



Janice Moore Cronan  
Family Oxen Yoke



Jackie Angel – WWII Letter from her Father



Linda Mansell Martin – Picture of James and Nancy Cook Dorris



Lynn Sickeler – Stars and Stripes Forever sheet music



Janice Talluto – Athletic Pins



Cynthia McAtee – Family Quilt



Ed Malowney  
Land Lottery Info

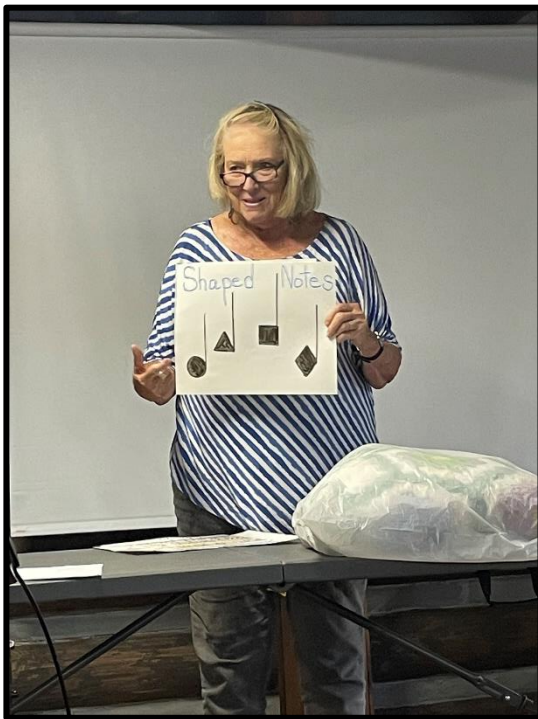




Pat Miller – Coca Cola Memorabilia



Shack Lewis – Old Wooden Practice Piano



Sheila Rucker Pennebaker – Shaped Note Music



Ben Hollingsworth – Bicentennial Quilt

## September 2022

### **Roswell Historian Michael Hitt: Civil War Troop Movements and Events in the Alpharetta and Roswell area.**

For the September 2022 membership meeting, Michael Hitt, a local historian, spoke to the members about the Civil War and events in our local area. Michael is a favorite area speaker. He is a Kennesaw State University graduate with a major in Criminal Justice. After serving six years in the U.S. Army, he worked for 34 years in law enforcement at Georgia Tech and the City of Roswell. He has 15 publications. In one of his books, *Charged With Treason*, Hitt solved the mystery of what happened to the Roswell Mill workers who were transported to the North. Hitt has been featured several times on TV and is currently teaching



Georgia National Guard cadet officers at the Georgia Military Institute in Marietta. He is the lucky father of three wonderful adults.

At our membership meeting, Michael detailed military operations of the Confederate and Union forces in the Alpharetta and Roswell area as part of Union General William T. Sherman's Atlanta campaign in the late summer and fall of 1864. Hitt, dressed in the uniform of a Union Major (see picture), covered the daily military movements. He also told the story of the Roswell Mill worker ordeal involving their arrests and charges of treason and shipped north by train. Hitt, through his detailed research, sets the record straight regarding the myth of the disappearing Roswell workers. He also told the story of the Roswell Battalion composed of mostly male employees who were organized to protect the town. The three stories begin at Roswell but follow very different paths.

Based upon the attendee's reaction, Michael Hitt hit a home run!

*~Ed Malowney*

## St. James United Methodist Church 155 Year Celebration



St. James United Methodist Church celebrated with the community its 155 years of rich history in Alpharetta on Saturday and Sunday, September 10th and 11th, 2022.

Of particular note to the Alpharetta & Old Milton County Historical Society membership was the renaming of the church youth Center for Excellence to the Chestene M. Carter Center of Excellence in honor of Chestene Manning Carter. Chestene was a long-time AOMCHS member and served two terms as President of the Society.

The dedication began Saturday, September 10, 2022 at 1:00 pm in the sanctuary of the church with a ribbon-cutting at 1:30, followed by a reception and tour of the newly renamed building. A concert, featuring Orchestra Noir and KT Collaborative, began at 3:30 pm. A special anniversary service was held on Sunday, September 11, 2022 at 8:00 and 11:00am. All weekend events were open to the public.

---

*The Alpharetta & Old Milton County Historical Society (AOMCHS) is a non-profit 501(c) (3) organization governed by the State of Georgia. It operates under a Board of Trustees consisting of elected trustees, officers, and standing committee chairpersons. The motto for the Alpharetta & Old Milton County Historical Society is "Preserve the Past, in the Present, for the Future." The Mansell House & Gardens is managed by the Historical Society and is located at 1835 Old Milton Parkway, Alpharetta. It is a special events facility that can be rented as a special place for families to celebrate the important events of life such as Births, Weddings, Graduations, Reunions, Showers, Anniversaries, Birthdays, Christenings, and more. The AOMCHS also manages the MHS FFA Log Cabin on Milton Avenue. If anyone would like more information on becoming a member of the Alpharetta & Old Milton County Historical Society, please contact: Mary Lee, Membership Chair, at [marymar1@comcast.net](mailto:marymar1@comcast.net) or Ben Hollingsworth, Public Relations Chair, at [bhollyart@comcast.net](mailto:bhollyart@comcast.net)*

Follow us on Facebook at Alpharetta & Old Milton County Historical Society

Website: [www.aomchs.org](http://www.aomchs.org)

*History Matters*, The AOMCHS newsletter, is published four times a year

Newsletter Editor: Jackie Angel, AOMCHS Secretary

*Fall 2022 (October, November, December)*